

卡輪式鎖模扣 MPLK/MPLKS LATCH LOCK

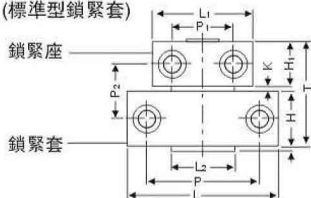


碟形彈簧，內部滾輪以及卡輪的組合，能使模具的開合具有良好的平衡性。滾輪的旋轉能較好的防止偏心磨損的發生。鎖緊套為上下對稱式，所以若有磨損也可倒置安裝以再次使用。因為鎖緊座的背面有避空位，所以模板上有臺階時也可以使用。

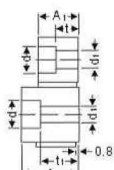
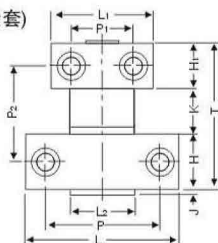
Disc spring, and a combination of internal roller card wheel, can make the opening and closing of the mold has good balance. Wheel rotation can better prevent eccentric wear occurs. The locking sleeve is symmetric, so if the wear can also be installed to use again. Because the back of the locking seat is having vacancy, can also use so the template has the steps.

材質：SK3(套) + S50C (座)

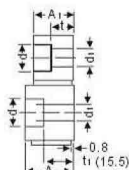
MPLK (標準型鎖緊套)



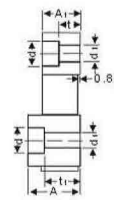
MPLKS (緊貼型鎖緊套)



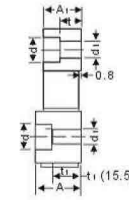
MPLK



MPLKS

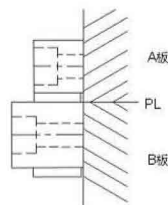
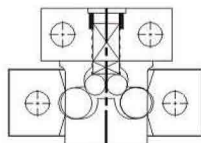


MPLK80



MPLKS80

● 安裝示意圖
Installation diagram



標準型：

Type	尺寸Size																拉力 (kgf) 1套 (常溫狀態)	單價 Unit price	
	L	L ₁	L ₂	T	H	H ₁	J	K	P	P ₁	P ₂	A	A ₁	t	t ₁	d			d ₁
MPLK (標準型鎖緊套)	10	48	36	25	42	22	18	2	2	36	24	22	24	16	9.5	18	11	6.5	50
	20	54	42																100
	30	65	46	35	48.5	25	20	3.5	3.5	50	31	26	27	19	9.5	17	14	9	150
	60	73	50																400
	80S	103	65																48
MPLKS (緊貼型鎖緊套)	30	65	46	35	48.5	25	20	3.5	3.5	50	31	26	24	19	9.5	15.5	14	9	150
	60	73	50																300
	80S	103	65																48

加長型：

Type	尺寸Size																拉力 (kgf) 1套 (常溫狀態)	單價 Unit price	
	L	L ₁	L ₂	T	H	H ₁	J	K	P	P ₁	P ₂	A	A ₁	t	t ₁	d			d ₁
MPLK (標準型鎖緊套)	60												27		17				
MPLKS (緊貼型鎖緊套)		73	50	35	87.5	25	20	3.5	42.5	52	33	65		19	9.5		14	9	400
	100												24		15.5				

Order: Type No. x Pcs
MPLK x 10

鎖模
組件
系列