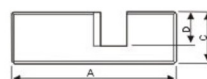
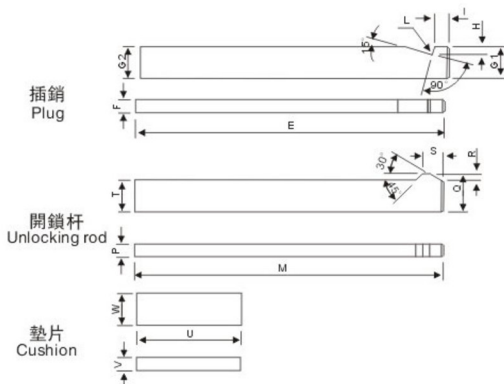


# 鎖模扣 LLL LATCH LOCK

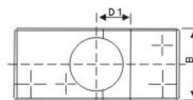


消除了打碎模具的可能性，因為不需要任何可以改變的調整或需要可能意外碰掉的連接。適用於一般的或重型的模具，每副模具最少需要四個鎖模扣。

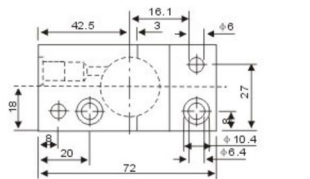
To eliminate the possible break the mold, because it does not require any can be changed to adjust or may be connected to accidentally drop. Applicable to general or heavy die, each mold need at least four locking buckle.



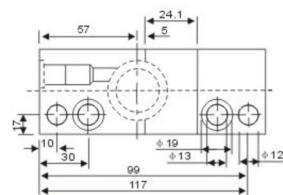
鎖模機架  
Locking blocks



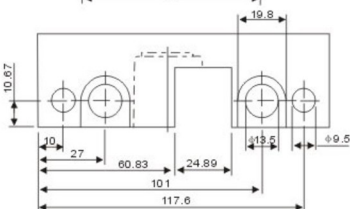
LLL051E



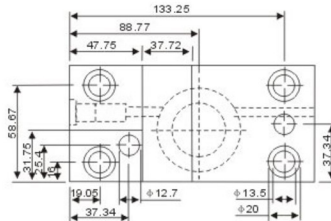
LLL101E



LLL151



LLL201



Type	尺寸 Size										
	A	B	C	D NOM.	E	F	G1 NOM.	G2 NOM.	H	I NOM.	L RAD
LLL 051E	80	35	25	16.2	180	7.9	16	16	3.4	6	1
LLL 101E	127	47	37	22.2	254	11.9	24	24	3.5	12	1
LLL 151		49.2	36.5			12.07	24.56	24.81	2.92	12.7	0.75
LLL 201	152.5	74.6	61.9	38.1	406	24.77	37.21	37.46	4.75	15.9	1

Type	尺寸 Size									單價 ¥ Unit price
	M	P	Q	R NOM	S	T	U	V	W	
LLL 051E	180	7.9	16	3	3.5	12.5	55	8	12	850.00
LLL 101E	254	9.9	24	4	16	20	75	12	20	1100.00
LLL 151		9	24.81	4.76	15.87	20.95	76.2	12.39	22.22	1160.00
LLL 201	406	12.07	37.46	6.98	22.22	31.87	114.3	25.27	38.1	1700.00

Order: Type No. x Pcs  
LLL 051E x 10

鎖模組件系列  
Mold locking component series