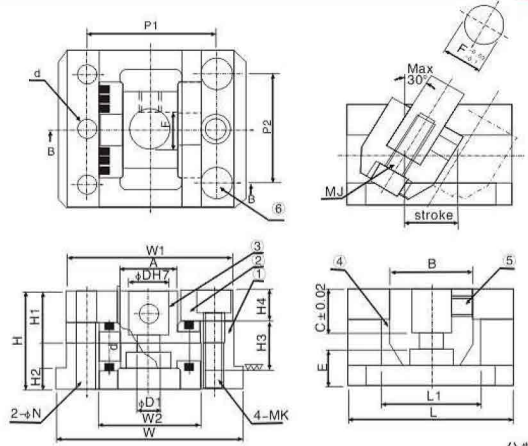


# 斜頂座 KOCUF



公制: mm

Type.NO	D	d	D1	A	B	C	E	F	MJ	H	H1	H2	H3	H4	L	L1	W	W1	W2	P1	P2	MK	φN	Stroke	單價
KOCUS-8	8	7	4.5	11	20	8	10	7	M4	22	12.5	5	11	7	32	20	33	30	19	24	20	M3	3	10	
KOCUS-10	10	7	5.5	15	25	10	12.5	9	M5	27	15.5	5	15	8	45	25	45	40	25	32	30	M4	4	18	
KOCUS-12	12	10	7	17	25	12	15	11	M6	32	18	7	16	10	50	30	57	51	31	39	35	M6	6	20	
KOCUS-16	16	12	9	22	30	16	15	14.5	M8	36	20	8	20	10	65	40	65	58	38	46	40	M6	6	25	
KOCUS-20	20	14	11	26	40	20	16	18	M10	42	23	11	22	12	80	50	80	72	44	56	55	M8	8	30	
KOCUS-25	25	16	14	32	45	25	17	22.5	M12	50	28	15	26	15	90	55	93	85	52	66	65	M10	10	35	
KOCUS-30	30	18	14	38	50	30	17	27	M12	55	30	15	30	15	100	60	101	93	60	74	70	M10	10	40	
KOCUS-35	35	20	14	45	60	35	18	32	M12	62	35	15	34	18	120	75	120	110	70	85	80	M12	10	45	
KOCUS-40	40	25	18	55	70	40	19	36	M16	70	40	15	44	18	135	85	130	120	80	95	90	M12	10	50	
KOCUS-45	45	30	18	60	80	45	24	40	M16	80	45	15	50	20	150	95	140	130	90	105	110	M12	10	55	

Order:  x   
 KOCU-S-8 x 10

頂出系列  
Ejector series