

## 小水口標準特殊注口襯套(Φ120) Small water spigot standard special sprue bushing(Φ100)



JH028-2

**說明Denote:**

- 一、適用成型機規格：450T~1000T噴嘴機械孔(Φ120)
- 二、適用於小水口標準模胚系列

**三、優點介紹:**

- 1).定位環與灌嘴保證同心，射出噴嘴決不漏料；
- 2).有效減短料頭長度，降低廢料成本，且利于成型；
- 3).採用標準化設計製造，交貨迅速，經濟實用；
- 4).使用材質：鉻鋼；
- 5).可依模具實際規格及特殊要求量身定做。

**四、標準規格及價目對照表：(右表所示)**

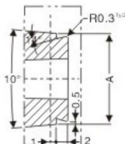
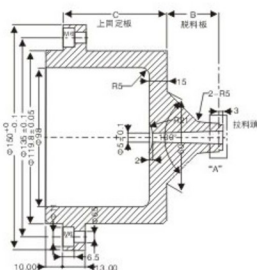
**Denote:**

- 一、Apply to machine's specification:450T~1000T(Φ120)
- 二、Apply to small water spigot standard mold embryo.

**三、Merit:**

- 1). Locating ring and sprue bushing concentric, do not leak material when ejecting.
- 2). Can reduce material head's length and reduce cost efficacious, and be propitious to molding.
- 3). Adopt standard design manufacture, delivery ontime, economic and with practicability.
- 4). Material: Nobellium steel.
- 5). Special product is available per the mold's specification.

**四、Standard specification and price list:(as list on right)**



	A	B	C	單價
Φ16	40	80	60	950
			100	1000
	50	80	60	970
			80	1010
			100	1040
			60	990
Φ20	60	80	80	1020
			100	1050
	40	80	60	1000
			80	1025
			100	1050
			60	1020
Φ25	50	80	60	1045
			100	1070
	60	80	60	1040
			80	1065
			100	1090
			60	1050
GL系列	40	80	80	1075
			100	1100
	50	80	60	1070
			80	1095
			100	1110
			60	1090
60	80	80	1115	
		100	1140	